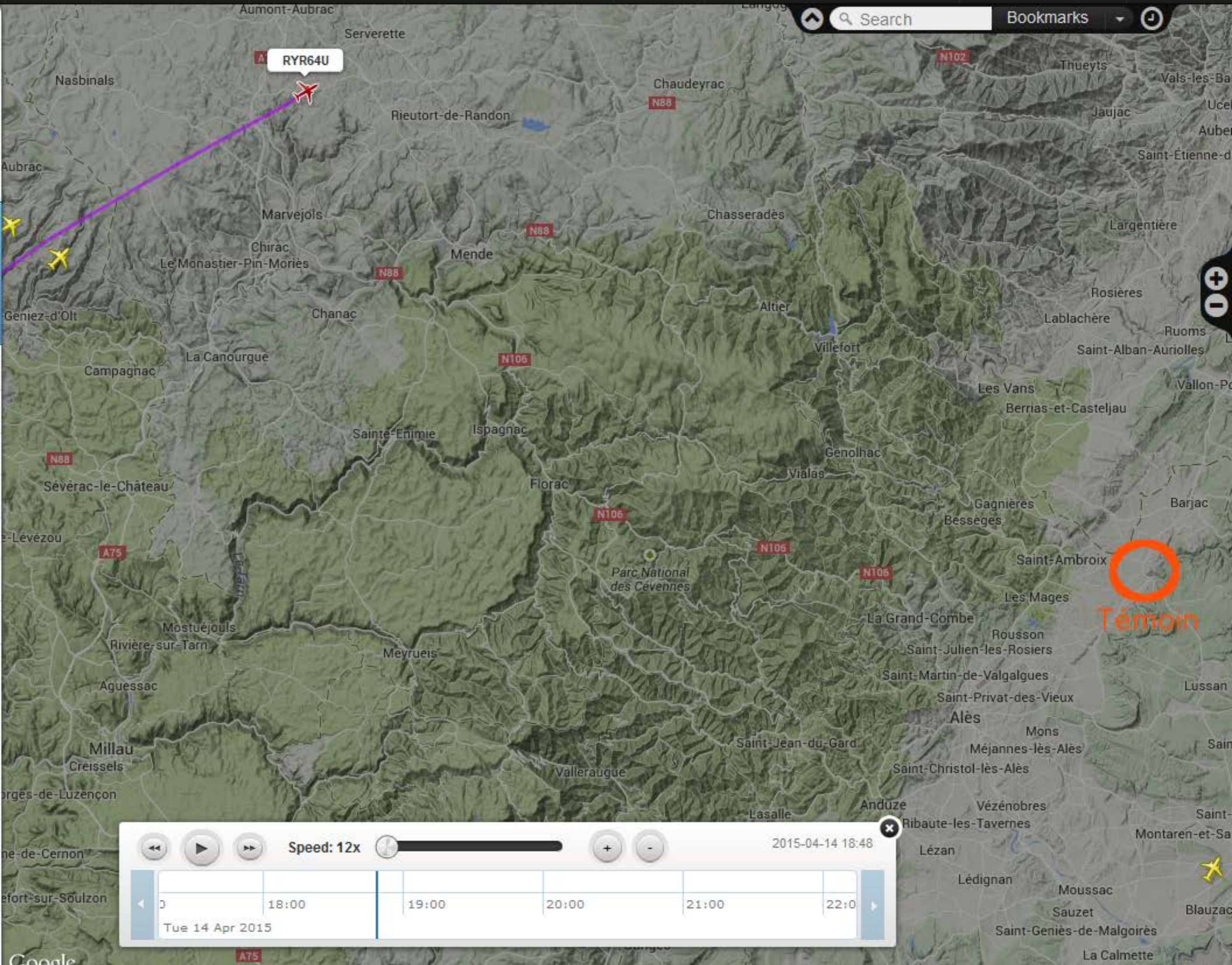




FR4596 / RYR64U
Ryanair
OPO → **BLQ**
Porto → Bologna
STD 18:25 WEST STA 22:05 CEST
ATD 18:31 WEST ETA 21:50 CEST



Aircraft	(B738)
Boeing 737-8AS	
Registration	(4CA701)
EI-EBD	
Altitude	Vertical Speed
38,000 ft	0 fpm
Speed	Track
428 kt	59°
Latitude	Longitude
44.6693	3.342
Radar	Squawk
F-LFMT1	6755



Speed: 12x [Slider]

2015-04-14 18:48

Timeline: 18:00 | 19:00 | 20:00 | 21:00 | 22:00

Tue 14 Apr 2015



© Lars Rohde

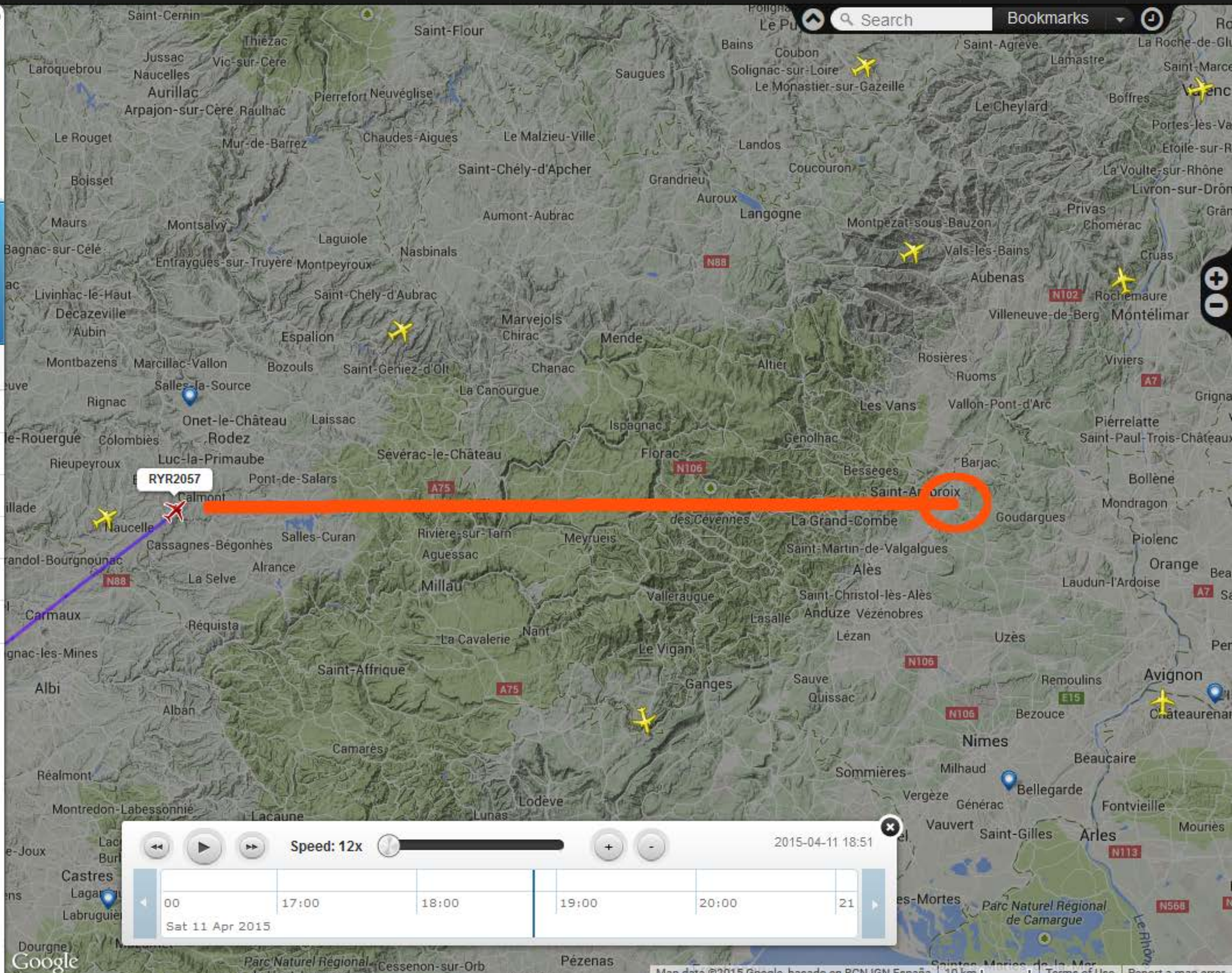
FR2057 / RYR2057
Ryanair

LIS → DLE
Lisbon Dole

STD 18:10 WEST STA 21:35 CEST
ATD 18:21 WEST ETA 21:37 CEST

3D

Aircraft	(B738)
Boeing 737-8AS	
Registration	(4CA8D9)
EI-ENN	
Altitude	Vertical Speed
31,700 ft	-1024 fpm
Speed	Track
376 kt	52°
Latitude	Longitude
44.1988	2.4056
Radar	Squawk
F-LFMT1	4321



Speed: 12x

2015-04-11 18:51

00 17:00 18:00 19:00 20:00 21

Sat 11 Apr 2015



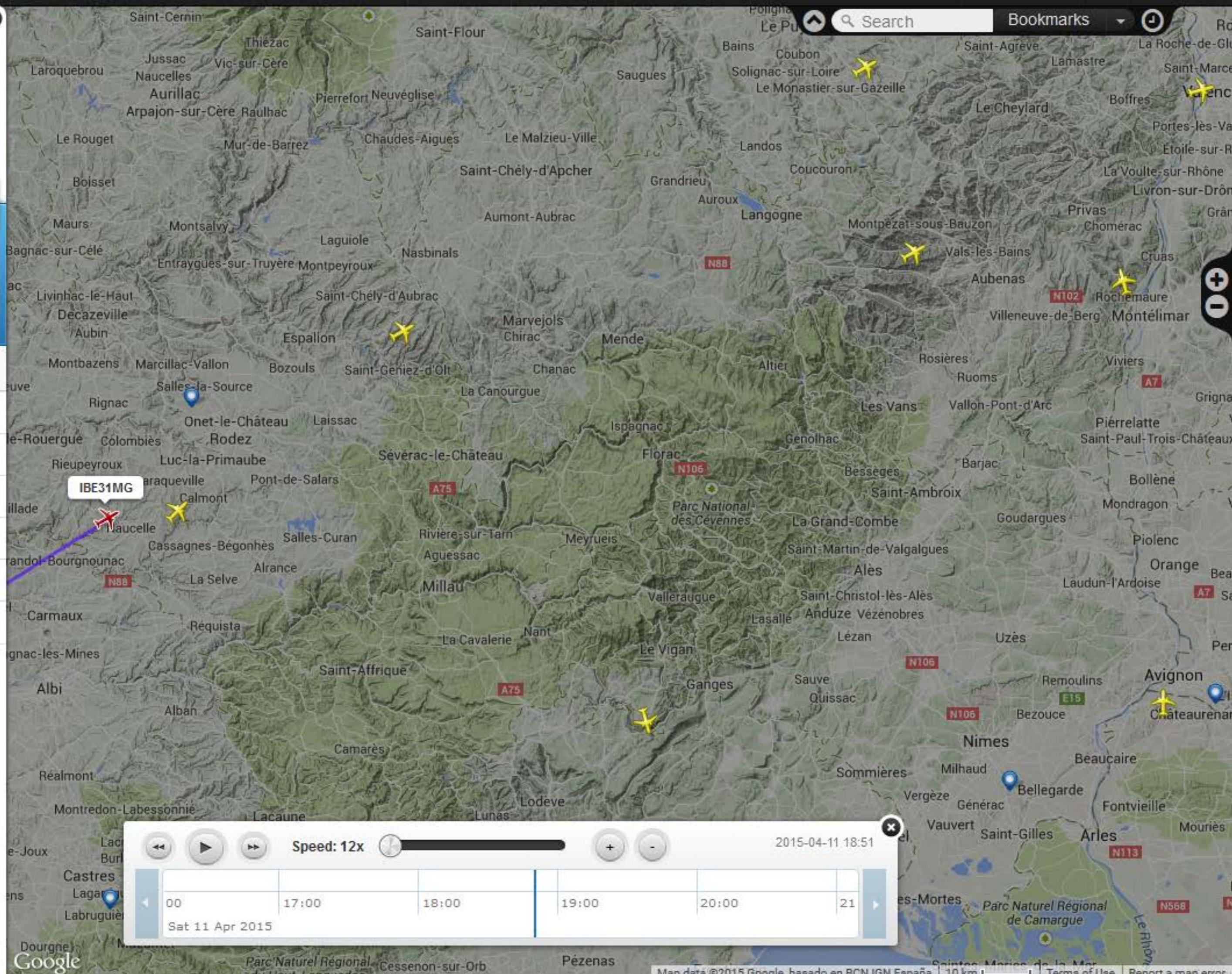
© Alberto Maroto Martin

IB3124 / IBE31MG
Iberia

MAD → **VIE**
Madrid → Vienna

STD 19:40 CEST STA 22:35 CEST
ATD 19:59 CEST ETA 22:32 CEST

Aircraft (A319)	
Airbus A319-111	
Registration (3413C3)	
EC-HGR	
Altitude	Vertical Speed
32,000 ft	0 fpm
Speed	Track
433 kt	57°
Latitude	Longitude
44.1882	2.2297
Radar	Squawk
F-LFBO5	1040



Speed: 12x

 2015-04-11 18:51

00 17:00 18:00 19:00 20:00 21

Sat 11 Apr 2015